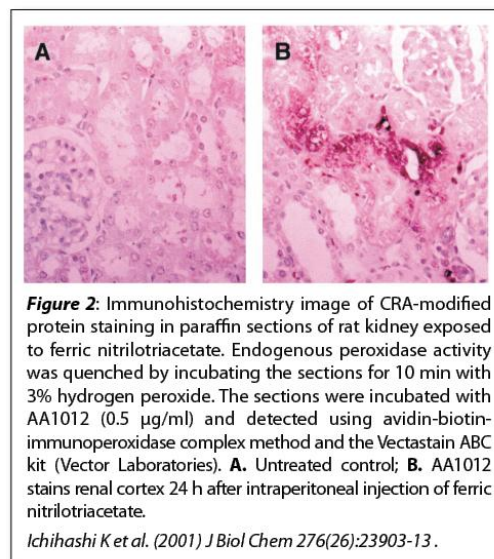
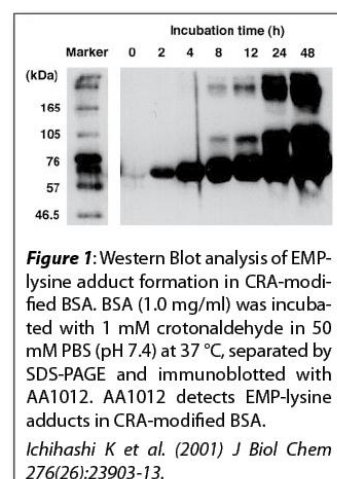


Data Sheet

CROTONALDEHYDE (CRA)-MODIFIED PROTEIN ANTIBODY, MONOCLONAL

Catalog no.:	AA1012.1
Immunogen:	Crotonaldehyde (CRA)-modified KLH
Host:	Mouse Balb/c
Clone no.:	82D3
Isotype:	IgG _{2a}
Matrix:	Protein A purified, 10 mM PBS, 0.1% NaN ₃ , 0.5% BSA
Specificity:	CRA-modified protein, especially CRA-lysine adduct N ^ε -(5-ethyl-2-methylpyridinium) [EMP] lysine
Contents:	30 µg (frozen; 100 µg/ml)
Known applications:	Western Blot ¹ , immunohistochemistry (paraffin sections, 0.5 – 1 µg/ml) ¹ This antibody has not been tested for use in all applications. This does not necessarily exclude its use in non-tested procedures. The stated dilutions are recommendations only. End users should determine optimal dilutions in their system using appropriate negative/positive controls.
Store at:	2-8°C (short term storage); -20 °C (long term storage) Repeated thawing and freezing must be avoided
References:	1. Ichihashi K, Osawa T, Toyokuni S, Uchida K (2001). Endogenous formation of protein adducts with carcinogenic aldehydes: implications for oxidative stress. <i>J Biol Chem</i> 276 (26): 23903-23913.
Last updated on:	05 July 2016



For research use only

Publishing research using AA1012? Please let us know so that we can cite your publication as a reference.

