

## Data Sheet

# HUMAN CHOLECYSTOKININ-RECEPTOR TYPE B [CCK-BR] (aa 191-204)

## ANTIBODY, POLYCLONAL

<b>Catalog no.:</b>	AE1127.1 / AE1127.2
<b>Immunogen:</b>	Synthetic human CCK-R Type B (aa 191-204), polyLysine conjugated (VYTVVQPVGPRVLQ)
<b>Synonyms:</b>	Gastrin/cholecystokinin type B receptor, Cholecystokinin-2 receptor (CCK2-R)
<b>Swiss-Prot No:</b>	P32239
<b>Gene Information:</b>	Gene Name: CCKBR, CCKRB GenelD: 887
<b>Host:</b>	Rabbit
<b>Matrix:</b>	Serum
<b>Specificity:</b>	Human CCK-R Type B
<b>Contents:</b>	20 µl / 100 µl (lyophilized) Resuspend in 20 µl / 100 µl aqua bidest.

**Known applications:** Western Blot (1:1000-3000)<sup>1</sup>, immunohistochemistry (paraffin sections, 1:500)<sup>1</sup>

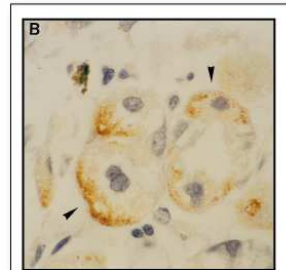
This antibody has not been tested for use in all applications. This does not necessarily exclude its use for non-tested procedures. The stated dilutions are recommendations only. We suggest that the applicant titrates the antibody in his/her system using appropriate negative/positive controls.

**Store at:** 2-8 °C (lyophilized); - 20 °C (dissolved)  
Repeated thawing and freezing must be avoided

**References:** 1. Kulaksiz H, Arnold R, Goke B, Maronde E, Meyer M, Fahrenholz F, Forssmann WG, Eissele R (2000). Expression and cell-specific localization of the cholecystokinin B/gastrin receptor in the human stomach. *Cell Tissue Res* **299**(2): 289-298.

**Last updated on:** 28 February 2012

**For research use only**



**Figure 1:** Immunohistochemistry image of CCK-BR staining in paraffin section of human stomach biopsy. The section was incubated with AE1127 (1:500) and detected using ABC technique. DAB was used as the chromogen. **(B)** AE1127 stains most, but not all, gastric parietal cells at the basolateral cell membrane and in the cytoplasm.

Kulaksiz H et al. (2000) *Cell Tissue Res* 299(2):289-98.

