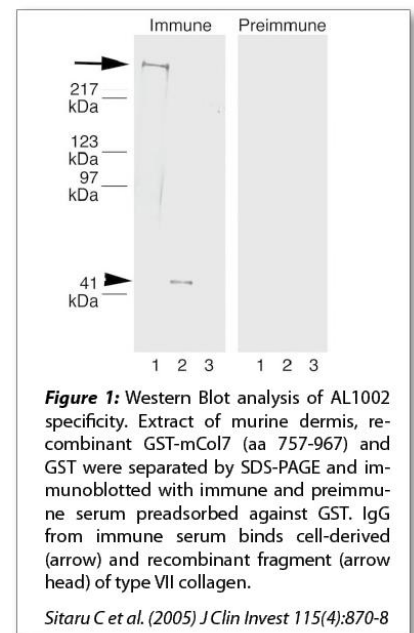


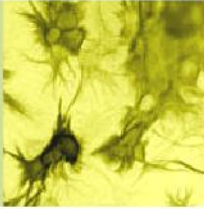
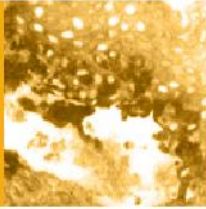
Data Sheet

MOUSE TYPE VII COLLAGEN

ANTIBODY, POLYCLONAL

Catalog no.:	AL1002.3 / AL1002.4
Immunogen:	Recombinant murine type VII collagen (mixture of fragments aa 97-200, aa 479-578, aa 757-967) GST fusion protein
Synonyms:	Long-chain collagen (LC collagen)
Swiss-Prot No:	Q63870
Gene Information:	Gene Name: Col7a1 GenelD: 12836
Host:	Rabbit
Matrix:	IgG, Protein G purified from serum; PBS
Specificity:	Recombinant murine type VII collagen (aa 757-967) Cross reacts with murine and human type VII collagen. Not tested for reactivity with type VII collagen from other species.
Contents:	10 µg / 100 µg (lyophilized) Resuspend in 10 µl / 100 µl aqua bidest.
Known applications:	ELISA (1:5000), Western Blot (1:500) ¹ , immunofluorescence (cryosections, mouse skin 1:1000, human skin 1:500) ¹ This antibody has not been tested for use in all applications. This does not necessarily exclude its use in non-tested procedures. The stated dilutions are recommendations only. End users should determine optimal dilutions in their system using appropriate negative/positive controls.
Store at:	2-8 °C (lyophilized); - 20 °C (dissolved) Repeated thawing and freezing must be avoided

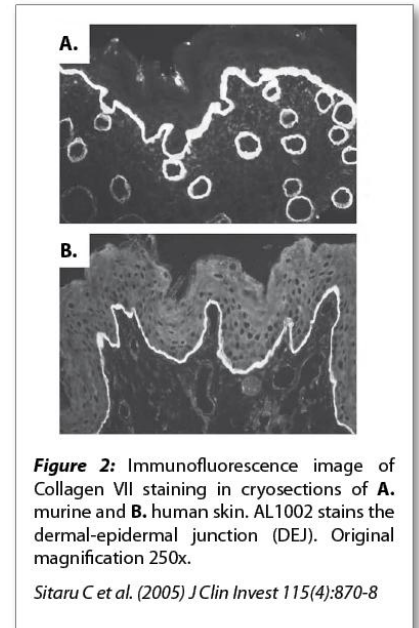


**References:**

1. Sitaru C, Mihai S, Otto C, Chiriac MT, Hausser I, Dotterweich B, Saito H, Rose C, Ishiko A, Zillikens D (2005). Induction of dermal-epidermal separation in mice by passive transfer of antibodies specific to type VII collagen. *J Clin Invest* 115(4): 870-878.

Last updated on:

21 March 2016

For research use only

Publishing research using AL1002? Please let us know so that we can cite your publication as a reference.

