

Data Sheet

MOUSE TYPE VII COLLAGEN

ANTIBODY, POLYCLONAL (IgG FRACTION)

Catalog no.: AL1004.3 / AL1004.4
Immunogen: Recombinant murine type VII collagen (aa 757-967) GST fusion protein
Synonyms: Long-chain collagen (LC collagen)
Swiss-Prot No: Q63870
Gene Information: Gene Name: Col7a1

GeneID: 12836

Host: Mouse
Matrix: IgG fraction, Protein G purified from serum; PBS pH 7.4
Specificity: Mouse type VII collagen

Cross-reacts with human skin.

Contents: 10 µg / 100 µg (lyophilized)
 Resuspend in 10 µl / 100 µl aqua bidest.

Known applications: Immunohistochemistry (cryosections)²
 Mice from which antibody is isolated show clinical evidence of epidermolysis bullosa acquisita (EBA)

This antibody has not been tested for use in all applications. This does not necessarily exclude its use in non-tested procedures. The stated dilutions are recommendations only. End users should determine optimal dilutions/concentrations in their system using appropriate negative/positive controls.

Store at: 2-8 °C (lyophilized); -20 °C (dissolved)
 Repeated thawing and freezing must be avoided

References:

1. Sitaru C, Mihai S, Otto C, Chiriac MT, Hausser I, Dotterweich B, Saito H, Rose C, Ishiko A, Zillikens D (2005). Induction of dermal-epidermal separation in mice by passive transfer of antibodies specific to type VII collagen. *J Clin Invest* **115**(4): 870-878.
2. Sitaru C, Chiriac MT, Mihai S, Buning J, Gebert A, Ishiko A, Zillikens D (2006). Induction of complement-fixing autoantibodies against type VII collagen results in subepidermal blistering in mice. *J Immunol* **177**(5): 3461-3468.

Last updated on: 28 July 2016

For research use only

Publishing research using AL1004? Please let us know so that we can cite your publication as a reference.

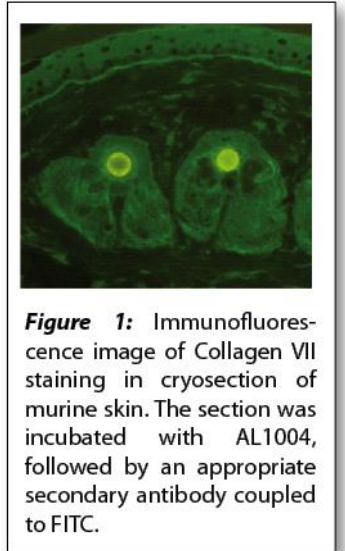


Figure 1: Immunofluorescence image of Collagen VII staining in cryosection of murine skin. The section was incubated with AL1004, followed by an appropriate secondary antibody coupled to FITC.