

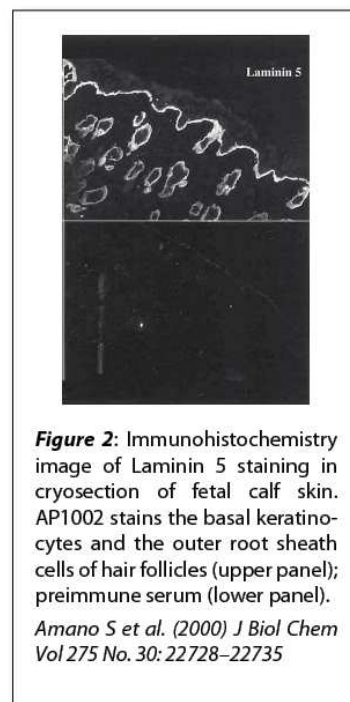
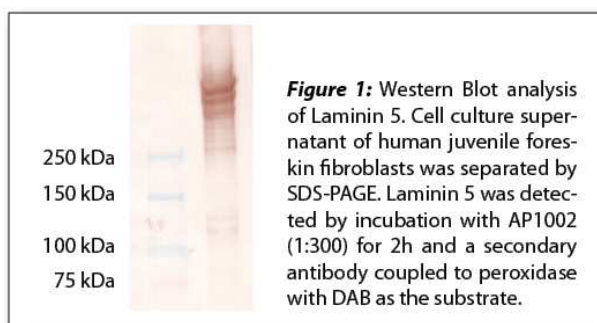
Data Sheet

HUMAN LAMININ 5

ANTIBODY, PURIFIED IgG, POLYCLONAL

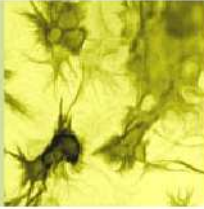
Catalog no.:	AP1002.3 / AP1002.4
Immunogen:	Human Laminin 5; Laminin 5 consists of three chains: $\alpha 3$, $\beta 3$ and $\gamma 2$
Synonyms:	Laminin 332, Epiligrin, Kalinin, Nicein
Swiss-Prot No:	Q16787, Q13751 and Q13753
Gene Information:	Gene names: LAMA3, LAMB3 and LAMC2 GenelD's: 3909, 3914 and 3918
Host:	Rabbit
Matrix:	Protein G purified IgG in PBS 0.2 % NaN ₃
Specificity:	Human total Laminin 5, bovine and rat Laminin 5
Contents:	10 μ g / 100 μ g (lyophilized) Resuspend in 10 μ l/100 μ l aqua bidest.
Known applications:	Western Blot ^{1,2,5,7} , immunoprecipitation ³ , immunohistochemistry (cryosections) ^{3,4,6,7} , immunocytochemistry ^{5,7}

This antibody has not been tested for use in all applications. This does not necessarily exclude its use for non-tested procedures. The stated dilutions are recommendations only. We suggest that the applicant titrates the antibody in his/her system using appropriate negative/positive controls.



Store at: 2-8 °C (lyophilized); - 20 °C (dissolved)
Repeated thawing and freezing must be avoided





References:

1. Marinkovich MP, Lunstrum GP, Burgeson RE (1992). The anchoring filament protein kalinin is synthesized and secreted as a high molecular weight precursor. *J Biol Chem* **267**(25): 17900-17906.
2. Zillikens D, Kawahara Y, Ishiko A, Shimizu H, Mayer J, Rank CV, Liu Z, Giudice GJ, Tran HH, Marinkovich MP, Brocker EB, Hashimoto T (1996). A novel subepidermal blistering disease with autoantibodies to a 200-kDa antigen of the basement membrane zone. *J Invest Dermatol* **106**(6): 1333-1338.
3. Amano S, Scott IC, Takahara K, Koch M, Champlaud MF, Gerecke DR, Keene DR, Hudson DL, Nishiyama T, Lee S, Greenspan DS, Burgeson RE (2000). Bone morphogenetic protein 1 is an extracellular processing enzyme of the laminin 5 gamma 2 chain. *J Biol Chem* **275**(30): 22728-22735.
4. Libby RT, Champlaud M-F, Claudepierre T, Xu Y, Gibbons EP, Koch M, Burgeson RE, Hunter DD, Brunken WJ (2000). Laminin Expression in Adult and Developing Retinae: Evidence of Two Novel CNS Laminins. *The Journal of Neuroscience* **20**(17): 6517-6528.
5. Waterman EA, Sakai N, Nguyen NT, Horst BAJ, Veitch DP, Dey CN, Ortiz-Urda S, Khavari PA, Marinkovich MP (2007). A Laminin-Collagen Complex Drives Human Epidermal Carcinogenesis through Phosphoinositol-3-Kinase Activation. *Cancer Research* **67**(9): 4264-4270.
6. Choi SK, Kim JH, Lee D, Lee JB, Kim HM, Tchah HW, Hahn TW, Joo M, Ha CI (2008). Different epithelial cleavage planes produced by various epikeratomes in epithelial laser in situ keratomileusis. *Journal of Cataract & Refractive Surgery* **34**(12): 2079-2084.
7. Tran M, Rousselle P, Nokelainen P, Tallapragada S, Nguyen NT, Fincher EF, Marinkovich MP (2008). Targeting a Tumor-Specific Laminin Domain Critical for Human Carcinogenesis. *Cancer Research* **68**(8): 2885-2894.

For research use only

