

Data Sheet

HUMAN LAMININ 5

NATIVE

Catalog no.:	AP1002AG.1 / AP1002AG.2
Name:	Human Laminin 5; Laminin 5 consists of three chains: $\alpha 3$, $\beta 3$, $\gamma 2$
Synonyms:	Laminin-332
MW:	~ 430 kDa
Swiss-Prot No:	Q16787, Q13751, and Q13753
Gene Information:	Gene Names: LAMA3, LAMB3, and LAMC2 GeneID's: 3909, 3914, and 3918
Source:	Human foreskin keratinocytes (cell culture supernatant)
Purification:	Affinity chromatography
Storage buffer:	PBS pH 7.4
Purity:	> 95% (SDS-PAGE)
Contents:	10 μ g / 100 μ g
Store at:	2-8 °C (short term storage); - 20 °C (long term storage) Repeated thawing and freezing must be avoided
References:	<ol style="list-style-type: none"> 1. Tsunenaga M, Adachi E, Amano S, Burgeson RE, Nishiyama T (1998). Laminin 5 can promote assembly of the lamina densa in the skin equivalent model. <i>Matrix Biology</i> 17(8-9): 603-613. 2. Oh J-E, Jang DH, Kim H, Kang HK, Chung C-P, Park WH, Min B-M (2009). $[\alpha 3][\beta 3]$ integrin promotes cell survival via multiple interactions between 14-3-3 isoforms and proapoptotic proteins. <i>Experimental Cell Research</i> 315(18): 3187-3200.
Last updated on:	28 February 2012

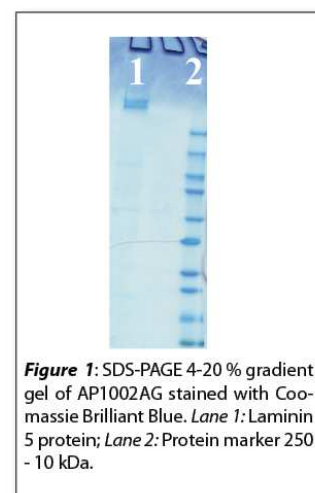


Figure 1: SDS-PAGE 4-20 % gradient gel of AP1002AG stained with Coomassie Brilliant Blue. Lane 1: Laminin 5 protein; Lane 2: Protein marker 250 - 10 kDa.

For research use only

