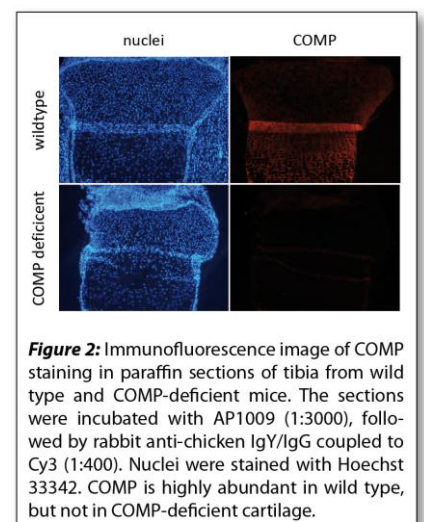
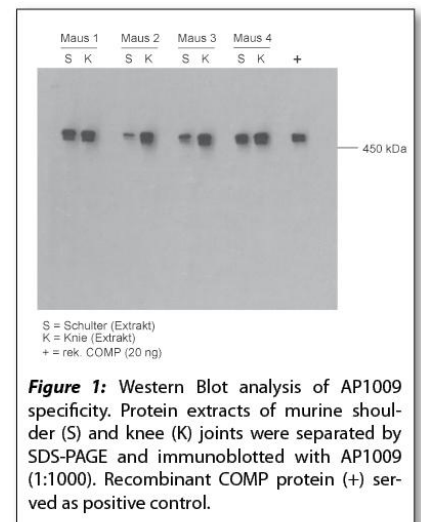


Data Sheet

RAT CARTILAGE OLIGOMERIC MATRIX PROTEIN (COMP)

ANTIBODY, POLYCLONAL

Catalog no.:	AP1009.1 / AP1009.2
Immunogen:	Recombinant rat COMP Fragment (Type III repeats + C-terminal region)
Swiss-Prot No:	P35444
Gene Information:	Gene Name: Comp GenelD: 25304
Host:	Chicken
Matrix:	Serum
Specificity:	Rat COMP, mouse and human COMP
Contents:	20 µl / 100 µl (lyophilized) Resuspend in 20 µl / 100 µl aqua bidest.
Known applications:	Western Blot (1:1000), immunohistochemistry (paraffin sections, 1:3000) This antibody has not been tested for use in all applications. This does not necessarily exclude its use for non-tested procedures. The stated dilutions are recommendations only. We suggest that the applicant titrates the antibody in his/her system using appropriate negative/positive controls.
Store at:	2-8 °C (lyophilized); - 20 °C (dissolved) Repeated thawing and freezing must be avoided
References:	1. Spitznagel L, Nitsche DP, Paulsson M, Maurer P, Zaucke F (2004). Characterization of a pseudoachondroplasia-associated mutation (His587-->Arg) in the C-terminal, collagen-binding domain of cartilage oligomeric matrix protein (COMP). <i>Biochem J.</i> 377 (Pt 2): 479-87.
Last updated on:	05 August 2016





Antibodies

For research use only

Publishing research using A 9215? Please let us know so that we can cite your publication as a reference.



Immundiagnostik AG

Stubenwald-Allee 8a · 64625 Bensheim · Germany

Phone: +49 (0) 62 51/70 19 00 · Fax: +49 (0) 62 51/84 94 30 · info@immundiagnostik.com · www.immundiagnostik.com