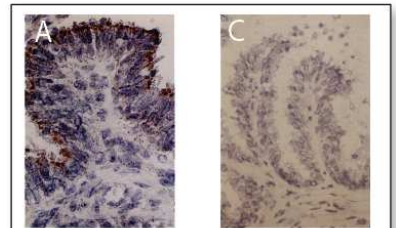


## Data Sheet

# BOVINE FIBROBLAST GROWTH FACTOR-1 (FGF-1)

## ANTIBODY, POLYCLONAL

<b>Catalog no.:</b>	AS1013.1 / AS1013.2
<b>Immunogen:</b>	Recombinant bovine FGF-1
<b>Synonyms:</b>	Heparin-binding growth factor 1 (HBGF-1), Acidic eye-derived growth factor II (EDGF II), Acidic fibroblast growth factor (aFGF), Endothelial cell growth factor beta and alpha chains, Prostatropin
<b>Swiss-Prot No:</b>	P03968
<b>Gene Information:</b>	Gene Name: FGF1, AFGF, FGF-1, FGFA, HBGF-1 GenelD: 281160
<b>Host:</b>	Rabbit
<b>Matrix:</b>	Serum
<b>Specificity:</b>	Bovine, human, domestic ruminant and pig FGF-1
<b>Contents:</b>	20 µl / 100 µl (lyophilized) Resuspend in 20 µl / 100 µl aqua bidest.
<b>Known applications:</b>	RIA <sup>1</sup> , Western Blot (1:10 000) <sup>1</sup> , immunohistochemistry (cryosections, 1:5000) <sup>1</sup>  This antibody has not been tested for use in all applications. This does not necessarily exclude its use for non-tested procedures. The stated dilutions are recommendations only. We suggest that the applicant titrates the antibody in his/her system using appropriate negative/positive controls.
<b>Store at:</b>	2-8 °C (lyophilized); - 20 °C (dissolved) Repeated thawing and freezing must be avoided
<b>References:</b>	1. Gabler C, Lauer B, Einspanier A, Schams D, Einspanier R (1997). Detection of mRNA and immunoreactive proteins for acidic and basic fibroblast growth factor and expression of the fibroblast growth factor receptors in the bovine oviduct. <i>J Reprod Fertil</i> <b>109</b> (2): 213-221.
<b>Last updated on:</b>	28 February 2012



**Figure 1:** Immunohistochemistry image of FGF-1 staining in cryosections of bovine oviduct. The sections were treated with 0.5% H<sub>2</sub>O<sub>2</sub> in PBS to reduce endogenous peroxidase activity. **(A)** The section was incubated with AS1013 (1:5000). Positive staining appears red, the nuclei are stained blue. Scale bar = 12.6 µm. **(C)** Control section incubated with rabbit IgG. Scale bar = 20 µm.

Gabler C et al. (1997) *J Reprod Fert* 109:213-221

**For research use only**

