

Data Sheet

HUMAN CHROMOGRANIN-A [CgA] (aa 17-38)

ANTIBODY, POLYCLONAL

Catalog no.:	AST1001.1 / AST1001.2
Immunogen:	Synthetic human CgA (aa 17-38) BSA-conjugated (CIVEVISDTLSKSPMPVSYEC) Underlined amino acids were substituted or added for technical reasons.
Synonyms:	Pituitary secretory protein I, SP-I
Swiss-Prot No:	P10645
Gene Information:	Gene Name: CHGA GenID: 1113
Host:	Rabbit
Matrix:	Serum
Specificity:	Human Chromogranin A (aa 17-38); bovine, porcine, equine, and sheep CgA (aa 17-38) There was no cross reactivity detected with human CgA peptides (aa 1-17; 63-76; 100-113; 116-130; 176-195; 238-247; 284-301; 324-337; 361-372; 375-384; 411-424), intact human or bovine CgA, human CgB peptide (aa 16-37), intact human CgB, insulin, glucagon, somatostatin (aa 1-14), or pancreatic polypeptide.
Contents:	20 µl / 100 µl (lyophilized) Resuspend in 20 µl / 100 µl aqua bidest.
Known applications:	RIA ^{1,6,7} , Western Blot, immunohistochemistry (paraffin sections, 1:80-1000) ^{2,3,4,5,7} This antibody has not been tested for use in all applications. This does not necessarily exclude its use in non-tested procedures. The stated dilutions are recommendations only. End users should determine optimal dilutions in their system using appropriate negative/positive controls.
Store at:	2-8 °C (lyophilized); - 20 °C (dissolved) Repeated thawing and freezing must be avoided
References:	1. Stridsberg M, Angeletti RH & Helle KB (2000) Characterisation of N-terminal chromogranin A and chromogranin B in mammals by region-specific radioimmunoassays and chromatographic separation methods. <i>J. Endocrinol.</i> 165 : 703–714. 2. Portela-Gomes GM & Stridsberg M (2001) Selective processing of chromogranin A in the different islet cells in human pancreas. <i>J. Histochem. Cytochem.</i> 49 : 483–490.

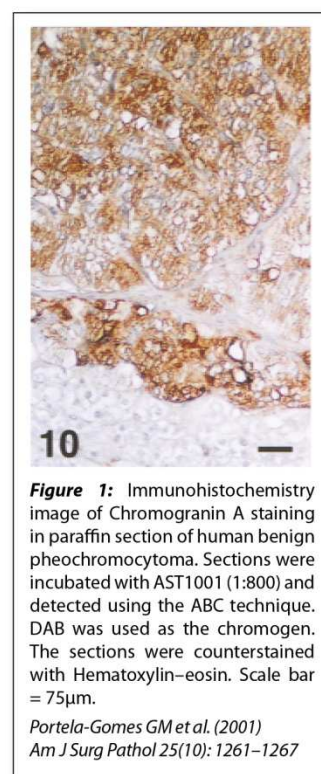
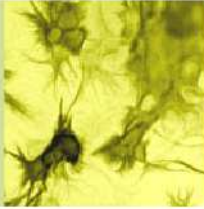


Figure 1: Immunohistochemistry image of Chromogranin A staining in paraffin section of human benign pheochromocytoma. Sections were incubated with AST1001 (1:800) and detected using the ABC technique. DAB was used as the chromogen. The sections were counterstained with Hematoxylin–eosin. Scale bar = 75µm.

Portela-Gomes GM et al. (2001)
Am J Surg Pathol 25(10): 1261–1267





3. Portela-Gomes GM, Grimelius L, Johansson H, Wilander E & Stridsberg M (2001) Chromogranin A in human neuroendocrine tumors: an immunohistochemical study with region-specific antibodies. *Am. J. Surg. Pathol.* **25**: 1261–1267.
4. Portela-Gomes GM & Stridsberg M (2002) Chromogranin A in the human gastrointestinal tract: an immunocytochemical study with region-specific antibodies. *J. Histochem. Cytochem.* **50**: 1487–1492.
5. Jin L, Zhang S, Bayliss J, Scheithauer B, Qian X, Kobayashi I, Stridsberg M & Lloyd R V (2003) Chromogranin a processing in human pituitary adenomas and carcinomas: analysis with region-specific antibodies. *Endocr. Pathol.* **14**: 37–48.
6. Stridsberg M, Eriksson B, Öberg K & Janson ET (2004) A panel of 11 region-specific radioimmunoassays for measurements of human chromogranin A. *Regul. Pept.* **117**: 219–227.
7. Tartaglia A, Portela-Gomes GM, Öberg K, Vezzadini P, Foschini MP & Stridsberg M (2006) Chromogranin A in gastric neuroendocrine tumours: An immunohistochemical and biochemical study with region-specific antibodies. *Virchows Arch.* **448**: 399–406.

Last updated on: 05 Januar 2016

For research use only

Publishing research using AST1001? Please let us know so that we can cite your publication as a reference.

