

Data Sheet

HUMAN CHROMOGRANIN A [CgA] (aa 63-76)

ANTIBODY, POLYCLONAL

Catalog no.:	AST1002.1 / AST1002.2
Immunogen:	Synthetic human CgA (aa 63-76) KLH-conjugated (<u>C</u> YDLALQGA <u>K</u> ERAHQQ) <small>Underlined amino acids were substituted or added for technical reasons.</small>
Synonyms:	Pituitary secretory protein I, SP-I
Swiss-Prot No:	P10645
Gene Information:	Gene Name: CHGA GenID: 1113
Host:	Rabbit
Matrix:	Serum
Specificity:	Human CgA (aa 63-76)

There was no cross reactivity detected with human CgA peptides (aa 1-17; 17-38; 100-113; 116-130; 176-195; 238-247; 284-301; 324-337; 361-372; 375-384; 411-424).

Contents:	20 µl / 100 µl (lyophilized) Resuspend in 20 µl / 100 µl aqua bidest.
------------------	--

Known applications:	RIA ^{4,5} , Western Blot, immunohistochemistry (paraffin sections, 1:160-1000) ^{1,2,3,5}
----------------------------	--

This antibody has not been tested for use in all applications. This does not necessarily exclude its use in non-tested procedures. The stated dilutions are recommendations only. End users should determine optimal dilutions in their system using appropriate negative/positive controls.

Store at:	2-8 °C (lyophilized); -20 °C (dissolved) Repeated thawing and freezing must be avoided
------------------	---

References:	<ol style="list-style-type: none"> Portela-Gomes GM & Stridsberg M (2001) Selective processing of chromogranin A in the different islet cells in human pancreas. <i>J. Histochem. Cytochem.</i> 49: 483-490. Portela-Gomes GM & Stridsberg M (2002) Chromogranin A in the human gastrointestinal tract: an immunocytochemical study with region-specific antibodies. <i>J. Histochem. Cytochem.</i> 50: 1487-1492. Jin L, Zhang S, Bayliss J, Scheithauer B, Qian X, Kobayashi I, Stridsberg M & Lloyd R V (2003) Chromogranin a processing in human pituitary adenomas and carcinomas: analysis with region-specific antibodies. <i>Endocr. Pathol.</i> 14: 37-48. Stridsberg M, Eriksson B, Öberg K & Janson ET (2004) A panel of 11 region-specific radioimmunoassays for measurements of human chromogranin A. <i>Regul. Pept.</i> 117: 219-227.
--------------------	--

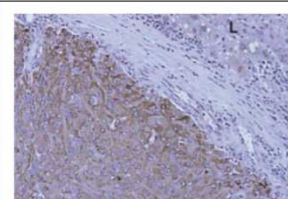


Figure 1: Immunohistochemistry image of Chromogranin A staining in paraffin section of human ACTH carcinoma metastatic to liver. After antigen retrieval with microwave treatment, sections were incubated overnight at 4 °C with AST1002 (1:1000). Staining was performed using the ABC technique with DAB as the chromogen. L, liver cells. Original magnification: x200.

Jin L et al. (2003) *Endocrine Pathology* 14(1): 37-48





Antibodies

5. Tartaglia A, Portela-Gomes GM, Öberg K, Vezzadini P, Foschini MP & Stridsberg M (2006)
Chromogranin A in gastric neuroendocrine tumours: An immunohistochemical and biochemical study
with region-specific antibodies. *Virchows Arch.* **448**: 399–406.

Last updated on: 05 Januar 2016

For research use only

Publishing research using AST1002? Please let us know so that we can cite your publication as a reference.



Immundiagnostik AG

Stubenwald-Allee 8a · 64625 Bensheim · Germany

Phone: +49 (0) 62 51/70 19 00 · Fax: +49 (0) 62 51/84 94 30 · info@immundiagnostik.com · www.immundiagnostik.com