

Data Sheet

HUMAN CHROMOGRANIN A [CgA] (aa 100-113)

ANTIBODY, POLYCLONAL

Catalog no.:	AST1003.1 / AST1003.2
Immunogen:	Synthetic human CgA (aa 100-113) KLH-conjugated (<u>CY</u> KEAVEEPSSKD <u>VME</u>) <small>Underlined amino acids were substituted or added for technical reasons.</small>
Synonyms:	Pituitary secretory protein I, SP-I
Swiss-Prot No:	P10645
Gene Information:	Gene Name: CHGA GeneID: 1113
Host:	Rabbit
Matrix:	Serum
Specificity:	Human CgA (aa 100-113) There was no cross reactivity detected with human CgA peptides (aa 1-17; 17-38; 63-76; 116-130; 176-195; 238-247; 284-301; 324-337; 361-372; 375-384; 411-424).
Contents:	20 µl / 100 µl (lyophilized) Resuspend in 20 µl / 100 µl aqua bidest.
Known applications:	RIA ^{4,5} , Western Blot, immunohistochemistry (paraffin sections, 1:40-1000) ^{1,2,3,5}

This antibody has not been tested for use in all applications. This does not necessarily exclude its use in non-tested procedures. The stated dilutions are recommendations only. End users should determine optimal dilutions in their system using appropriate negative/positive controls.

Store at: 2-8 °C (lyophilized); -20 °C (dissolved)

Repeated thawing and freezing must be avoided

References:

- Portela-Gomes GM & Stridsberg M (2001) Selective processing of chromogranin A in the different islet cells in human pancreas. *J. Histochem. Cytochem.* **49**: 483-490.
- Portela-Gomes GM & Stridsberg M (2002) Chromogranin A in the human gastrointestinal tract: an immunocytochemical study with region-specific antibodies. *J. Histochem. Cytochem.* **50**: 1487-1492.
- Jin L, Zhang S, Bayliss J, Scheithauer B, Qian X, Kobayashi I, Stridsberg M & Lloyd RV (2003) Chromogranin a processing in human pituitary adenomas and carcinomas: analysis with region-specific antibodies. *Endocr. Pathol.* **14**: 37-48.
- Stridsberg M, Eriksson B, Öberg K & Janson ET (2004) A panel of 11 region-specific radioimmunoassays for measurements of human chromogranin A. *Regul. Pept.* **117**: 219-227.

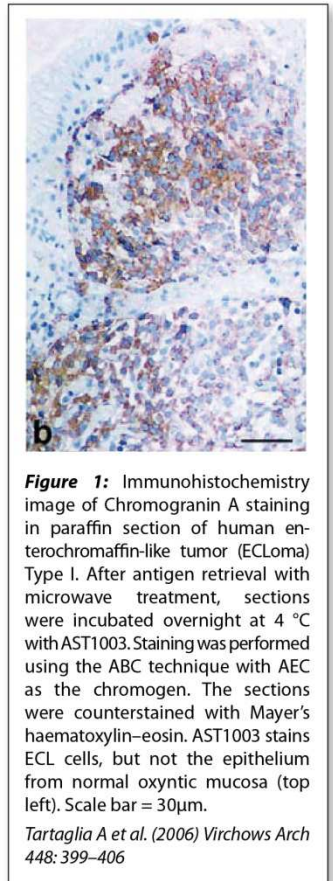


Figure 1: Immunohistochemistry image of Chromogranin A staining in paraffin section of human enterochromaffin-like tumor (ECLoma) Type I. After antigen retrieval with microwave treatment, sections were incubated overnight at 4 °C with AST1003. Staining was performed using the ABC technique with AEC as the chromogen. The sections were counterstained with Mayer's haematoxylin-eosin. AST1003 stains ECL cells, but not the epithelium from normal oxyntic mucosa (top left). Scale bar = 30µm.

Tartaglia A et al. (2006) *Virchows Arch* 448: 399-406





Antibodies

5. Tartaglia A, Portela-Gomes GM, Öberg K, Vezzadini P, Foschini MP & Stridsberg M (2006)
Chromogranin A in gastric neuroendocrine tumours: An immunohistochemical and biochemical study
with region-specific antibodies. *Virchows Arch.* **448**: 399–406.

Last updated on: 05 Januar 2016

For research use only

Publishing research using AST1003? Please let us know so that we can cite your publication as a reference.



Immundiagnostik AG

Stubenwald-Allee 8a · 64625 Bensheim · Germany

Phone: +49 (0) 62 51/70 19 00 · Fax: +49 (0) 62 51/84 94 30 · info@immundiagnostik.com · www.immundiagnostik.com