

## Data Sheet

# HUMAN CHROMOGRANIN A [CgA] (aa 361-372)

## ANTIBODY, POLYCLONAL

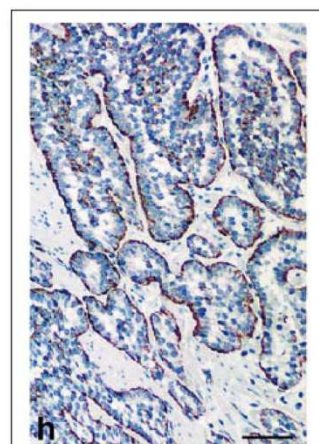
<b>Catalog no.:</b>	AST1009.1 / AST1009.2
<b>Immunogen:</b>	Synthetic human CgA (aa 361-372) KLH-conjugated (C <u>R</u> AYGFRGPGPQL) Underlined amino acids were substituted or added for technical reasons.
<b>Synonyms:</b>	Pituitary secretory protein I, SP-I
<b>Swiss-Prot No:</b>	P10645
<b>Gene Information:</b>	Gene Name: CHGA GenelD: 1113
<b>Host:</b>	Rabbit
<b>Matrix:</b>	Serum
<b>Specificity:</b>	Human CgA (aa 361-372)  There was no cross reactivity detected with human CgA peptides (aa 1-17; 17-38; 63-76; 100-113; 116-130; 176-195; 238-247; 284-301; 324-337; 361-372; 375-384; 411-424), intact human CgB, insulin, glucagon, somatostatin (aa 1-14), or pancreatic polypeptide.
<b>Contents:</b>	20 µl / 100 µl (lyophilized)  Resuspend in 20 µl / 100 µl aqua bidest.
<b>Known applications:</b>	RIA <sup>4,5</sup> , Western Blot, immunohistochemistry (paraffin sections, 1:80-1000) <sup>1,2,3,4,5</sup>

*For staining of paraffin sections microwave antigen retrieval in citrate buffer pH 6.0 is recommended<sup>1</sup>*

This antibody has not been tested for use in all applications. This does not necessarily exclude its use in non-tested procedures. The stated dilutions are recommendations only. End users should determine optimal dilutions in their system using appropriate negative/positive controls.

<b>Store at:</b>	2-8 °C (lyophilized); -20 °C (dissolved)  Repeated thawing and freezing must be avoided
------------------	---

<b>References:</b>	<ol style="list-style-type: none"> <li>Portela-Gomes GM &amp; Stridsberg M (2001) Selective processing of chromogranin A in the different islet cells in human pancreas. <i>J. Histochem. Cytochem.</i> <b>49</b>: 483-490.</li> <li>Portela-Gomes GM &amp; Stridsberg M (2002) Chromogranin A in the human gastrointestinal tract: an immunocytochemical study with region-specific antibodies. <i>J. Histochem. Cytochem.</i> <b>50</b>: 1487-1492.</li> </ol>
--------------------	--



**Figure 1:** Immunohistochemistry image of Chromogranin A staining in paraffin section of human enterochromaffin-like tumor (ECLoma) Type III. After antigen retrieval with microwave treatment, sections were incubated overnight at 4 °C with AST1009. Staining was performed using the ABC technique with AEC as the chromogen. The sections were counterstained with Mayer's haematoxylin-eosin. AST1009 stains mainly the periphery of neoplastic nests. Scale bar = 30µm.

Tartaglia A et al. (2006) *Virchows Arch* 448: 399-406



3. Jin L, Zhang S, Bayliss J, Scheithauer B, Qian X, Kobayashi I, Stridsberg M & Lloyd R V (2003) Chromogranin a processing in human pituitary adenomas and carcinomas: analysis with region-specific antibodies. *Endocr. Pathol.* **14**: 37–48.
4. Stridsberg M, Eriksson B, Öberg K & Janson ET (2004) A panel of 11 region-specific radioimmunoassays for measurements of human chromogranin A. *Regul. Pept.* **117**: 219–227.
5. Tartaglia A, Portela-Gomes GM, Öberg K, Vezzadini P, Foschini MP & Stridsberg M (2006) Chromogranin A in gastric neuroendocrine tumours: An immunohistochemical and biochemical study with region-specific antibodies. *Virchows Arch.* **448**: 399–406.

**Last updated on:** 05 January 2016

**For research use only**

**Publishing research using AST1009? Please let us know so that we can cite your publication as a reference.**

