

Data Sheet

ADMA

Antibody, polyclonal

Catalog no.: A 1071.1/ A 1071.2
Immunogen Asymmetric Dimethylarginine (ADMA) KLH-conjugated
Reference no.: CAS 65005-57-4
Host: Rabbit
Matrix: Serum
Specificity: Using conjugated ADMA-KLH, antibody specificity was performed with an ELISA test by competition experiments with the following compounds:

Compound: Cross-reactivity ratio (a)
 ADMA-BSA: 1
 SDMA-BSA: 1/>100
 NDMA-BSA: 1/>100
 L-Arginine-BSA: 1/>5000

(a) ADMA-BSA concentration/unconjugated or conjugated amino acids concentration at half displacement
 BSA = Bovine Serum Albumin

Contents: 20 µl / 100 µl (lyophilized)
 Resuspend in 20 µl / 100 µl aqua bidest.

Known applications: ELISA, Western Blot, immunohistochemistry (paraffin sections, 1:100)

This antibody has not been tested for use in all applications. This does not necessarily exclude its use for non-tested procedures. The stated dilutions are recommendations only. We suggest that the applicant titrates the antibody in his/her system using appropriate negative/positive controls.

Store at: 2-8 °C (lyophilized); - 20 °C (dissolved)
 Repeated thawing and freezing must be avoided

Last updated on: 16 March 2022

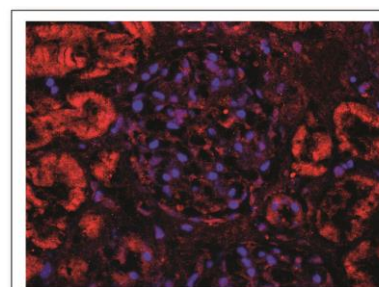


Figure 1: Immunofluorescence image of ADMA staining in paraffin embedded tissue section of human kidney. The section was incubated with A 1071 (1:100) followed by an appropriate secondary antibody coupled to Cy3. The nuclei were stained with DAPI. A 1071 stains the tubuli, but not the glomeruli of the kidney. Original magnification: x40.

For research use only

Publishing research using A 9215? Please let us know so that we can cite your publication as a reference.

