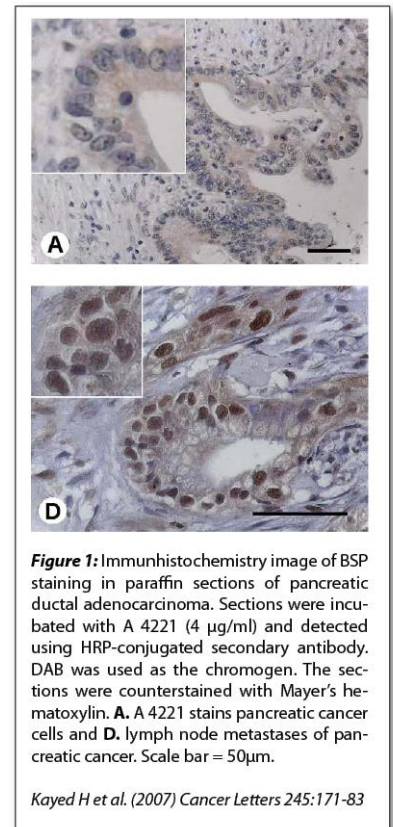
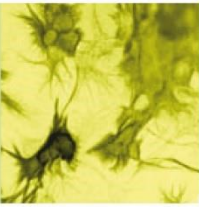
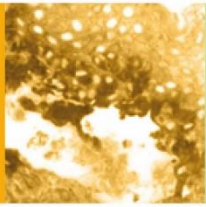


Data Sheet

HUMAN BONE SIALOPROTEIN (BSP) ANTIBODY, POLYCLONAL

Catalog no.:	A 4221.1 / A 4221.2
Immunogen:	Human Bone Sialoprotein (bone extract)
Synonyms:	Bone sialoprotein 2, BSP2, Cell-binding sialoprotein, Integrin-binding sialoprotein
Swiss-Prot No:	P21815
Gene Information:	Gene Name: IBSP Gene ID: 3381
Host:	Chicken
Matrix:	Purified IgY; PBS pH 7.4
Specificity:	Human Bone Sialoprotein There was no cross reactivity obtained with human Osteonectin, human Osteopontin, and human Alkaline Phosphatase.
Contents:	10 µg / 100 µg (lyophilized) Resuspend in 10 µl / 100 µl aqua bidest.
Known applications:	ELISA (1 µg/ml), RIA (20 ng/ml) ^{1, 4} , flow cytometry ² , Western Blot (1:100) ^{1, 3} , immunohistochemistry (paraffin sections, 4 µg/ml) ⁴ This antibody has not been tested for use in all applications. This does not necessarily exclude its use in non-tested procedures. The stated dilutions are recommendations only. End users should determine optimal dilutions in their system using appropriate negative/positive controls.
Store at:	2-8 °C (lyophilized); - 20 °C (dissolved) Repeated thawing and freezing must be avoided
References:	<ol style="list-style-type: none"> Karmatschek M, Maier I, Seibel MJ, Woitge HW, Ziegler R, Armbruster FP (1997). Improved purification of human bone sialoprotein and development of a homologous radioimmunoassay. <i>Clin Chem</i> 43:2076-82. Bellahcene A, Van Riet, I, de Greef C, Antoine N, Young MF, Van Camp B, Castronovo V (2000). Bone sialoprotein mRNA and protein expression in human multiple myeloma cell lines and patients. <i>Br J Haematol</i> 111:1118-21. Adwan H, Bauerle T, Najajreh Y, Elazer V, Golomb G, Berger MR (2004). Decreased levels of osteopontin and bone sialoprotein II are correlated with reduced proliferation, colony formation, and migration of GFP-MDA-MB-231 cells. <i>Int J Oncol.</i> 24(5):1235-44.





4. Kayed H, Kleeff J, Keleg S, Felix K, Giese T, Berger MR, Buchler MW, Friess H (2007). Effects of bone sialoprotein on pancreatic cancer cell growth, invasion and metastasis. *Cancer Lett* **245**(1-2): 171-183.

Last updated on: 06 April 2022

For research use only

Publishing research using A 4221? Please let us know so that we can cite your publication as a reference.

