

## Data Sheet

# HUMAN MRP8/14 (CALPROTECTIN, L1 PROTEIN)

## ANTIBODY, MONOCLONAL

<b>Catalog no.:</b>	A 1063.1 / A 1063.2
<b>Immunogen:</b>	Human MRP8 and MRP14 heterocomplex
<b>Synonyms:</b>	Calprotectin, S100A8/A9, Calgranulin A/B heterocomplex, L1 Protein
<b>Swiss-Prot No:</b>	P05109 and P06702
<b>Gene Information:</b>	Gene Name: S100A8 and S100A9 GeneID: 6279 and 6280
<b>Host:</b>	Mouse Balb/c
<b>Clone no.:</b>	FP 64
<b>Isotype:</b>	IgG <sub>1</sub>
<b>Matrix:</b>	Cell culture supernatant, Protein G purified, PBS pH 7.4 0.09% NaN <sub>3</sub>
<b>Specificity:</b>	Calprotectin

Human: subpopulation of human macrophages, monocytes and granulocytes; peripheral blood monocytes carry the antigen extra- and intracellularly, neutrophils only intracellularly.

Animal: subpopulation of macrophages of rhesus monkey

**Contents:** 10 µg / 100 µg (lyophilized)

Resuspend in 10 µl / 100 µl aqua bidest.

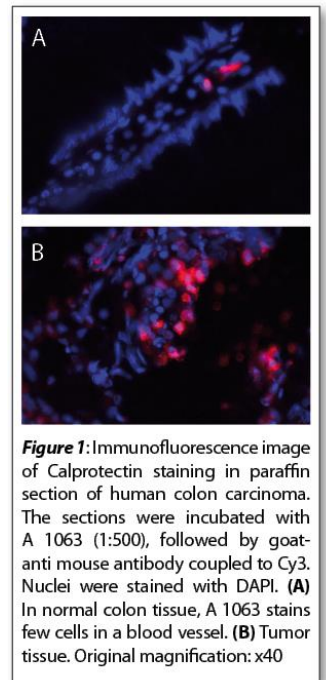
**Known applications:** ELISA, immunohistochemistry (paraffin sections, 1:1000)

This antibody has not been tested for use in all applications. This does not necessarily exclude its use for non-tested procedures. The stated dilutions are recommendations only. We suggest that the applicant titrates the antibody in his/her system using appropriate negative/positive controls.

**Store at:** 2-8 °C (lyophilized); -20 °C (dissolved)

Repeated thawing and freezing must be avoided

**Last update on:** 16 March 2022



**Figure 1:** Immunofluorescence image of Calprotectin staining in paraffin section of human colon carcinoma. The sections were incubated with A 1063 (1:500), followed by goat-anti mouse antibody coupled to Cy3. Nuclei were stained with DAPI. **(A)** In normal colon tissue, A 1063 stains few cells in a blood vessel. **(B)** Tumor tissue. Original magnification: x40

### For research use only

**Publishing research using A 1063? Please let us know so that we can cite your publication as a reference.**

