



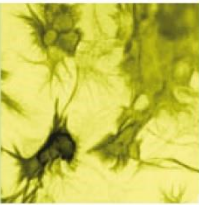
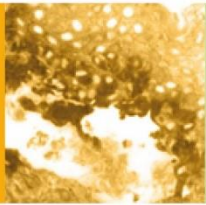
Data Sheet

HUMAN CHROMOGRANIN A [CgA] (aa 1-17)

ANTIBODY, POLYCLONAL

Catalog no.:	AST1000.1 / AST1000.2
Immunogen:	Synthetic human CgA (aa 1-17) KLH-conjugated (LPVNSPMNKG <u>DTEVMYC</u>) Underlined amino acids were substituted or added for technical reasons.
Synonyms:	Pituitary secretory protein I, SP-I
Swiss-Prot No:	P10645
Gene Information:	Gene Name: CHGA GeneID: 1113
Host:	Rabbit
Matrix:	Serum
Specificity:	Human Chromogranin A (aa 1-17); bovine, porcine, equine, and sheep CgA (aa 1-17) There was no cross reactivity detected with human CgA peptides (aa 17-38; 63-76; 100-113; 116-130; 176-195; 238-247; 284-301; 324-337; 361-372; 375-384; 411-424), intact human or bovine CgA, human CgB peptide (aa 16-37), intact human CgB, insulin, glucagon, somatostatin (aa 1-14), or pancreatic polypeptide.
Contents:	20 µl / 100 µl (lyophilized) Resuspend in 20 µl / 100 µl aqua bidest.
Known applications:	RIA ^{1, 5, 6} , Western Blot, immunohistochemistry (paraffin sections, 1:80-1000) ^{2, 3, 4, 6} This antibody has not been tested for use in all applications. This does not necessarily exclude its use in non-tested procedures. The stated dilutions are recommendations only. End users should determine optimal dilutions in their system using appropriate negative/positive controls.
Store at:	2-8 °C (lyophilized); - 20 °C (dissolved) Repeated thawing and freezing must be avoided
References:	<ol style="list-style-type: none"> Stridsberg M, Angeletti RH & Helle KB (2000) Characterisation of N-terminal chromogranin A and chromogranin B in mammals by region-specific radioimmunoassays and chromatographic separation methods. <i>J. Endocrinol.</i> 165: 703–714. Portela-Gomes GM & Stridsberg M (2001) Selective processing of chromogranin A in the different islet cells in human pancreas. <i>J. Histochem. Cytochem.</i> 49: 483–490. Portela-Gomes GM & Stridsberg M (2002) Chromogranin A in the human gastrointestinal tract: an immunocytochemical study with region-specific antibodies. <i>J. Histochem. Cytochem.</i> 50: 1487–1492.





4. Jin L, Zhang S, Bayliss J, Scheithauer B, Qian X, Kobayashi I, Stridsberg M & Lloyd R V (2003) Chromogranin a processing in human pituitary adenomas and carcinomas: analysis with region-specific antibodies. *Endocr. Pathol.* **14**: 37–48.
5. Stridsberg M, Eriksson B, Öberg K & Janson ET (2004) A panel of 11 region-specific radioimmunoassays for measurements of human chromogranin A. *Regul. Pept.* **117**: 219–227.
6. Tartaglia A, Portela-Gomes GM, Öberg K, Vezzadini P, Foschini MP & Stridsberg M (2006) Chromogranin A in gastric neuroendocrine tumours: An immunohistochemical and biochemical study with region-specific antibodies. *Virchows Arch.* **448**: 399–406.

Last updated on: 28 April 2022

For research use only

Publishing research using AST1000? Please let us know so that we can cite your publication as a reference.

