

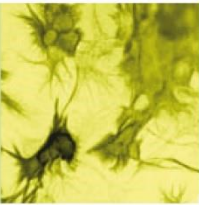
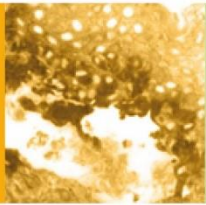
## Data Sheet

# HUMAN CHROMOGRANIN A [CgA] (aa 324-337)

## ANTIBODY, POLYCLONAL

<b>Catalog no.:</b>	AST1008.1 / AST1008.2
<b>Immunogen:</b>	Synthetic human CgA (aa 324-337) KLH-conjugated (CYWSKMDQLAKELTAE) Underlined amino acids were substituted or added for technical reasons.
<b>Synonyms:</b>	Pituitary secretory protein I, SP-I
<b>Swiss-Prot No:</b>	P10645
<b>Gene Information:</b>	Gene Name: CHGA GeneID: 1113
<b>Host:</b>	Rabbit
<b>Matrix:</b>	Serum
<b>Specificity:</b>	Human CgA (aa 324-337) There was no cross reactivity detected with human CgA peptides (aa 1-17; 17-38; 63-76; 100-113; 116-130; 176-195; 238-247; 284-301; 361-372; 375-384; 411-424).
<b>Contents:</b>	20 µl / 100 µl (lyophilized) Resuspend in 20 µl / 100 µl aqua bidest.
<b>Known applications:</b>	RIA <sup>4,5</sup> , Western Blot, immunohistochemistry (paraffin sections, 1:40-1000) <sup>1,2,3,5</sup>  This antibody has not been tested for use in all applications. This does not necessarily exclude its use in non-tested procedures. The stated dilutions are recommendations only. End users should determine optimal dilutions in their system using appropriate negative/positive controls.
<b>Store at:</b>	2-8 °C (lyophilized); -20 °C (dissolved)  Repeated thawing and freezing must be avoided
<b>References:</b>	<ol style="list-style-type: none"> <li>Portela-Gomes GM &amp; Stridsberg M (2001) Selective processing of chromogranin A in the different islet cells in human pancreas. <i>J. Histochem. Cytochem.</i> <b>49</b>: 483-490.</li> <li>Portela-Gomes GM &amp; Stridsberg M (2002) Chromogranin A in the human gastrointestinal tract: an immunocytochemical study with region-specific antibodies. <i>J. Histochem. Cytochem.</i> <b>50</b>: 1487-1492.</li> <li>Jin L, Zhang S, Bayliss J, Scheithauer B, Qian X, Kobayashi I, Stridsberg M &amp; Lloyd R V (2003) Chromogranin a processing in human pituitary adenomas and carcinomas: analysis with region-specific antibodies. <i>Endocr. Pathol.</i> <b>14</b>: 37-48.</li> <li>Stridsberg M, Eriksson B, Öberg K &amp; Janson ET (2004) A panel of 11 region-specific radioimmunoassays for measurements of human chromogranin A. <i>Regul. Pept.</i> <b>117</b>: 219-227.</li> </ol>





5. Tartaglia A, Portela-Gomes GM, Öberg K, Vezzadini P, Foschini MP & Stridsberg M (2006)  
Chromogranin A in gastric neuroendocrine tumours: An immunohistochemical and biochemical study  
with region-specific antibodies. *Virchows Arch.* **448**: 399–406.

**Last updated on:** 28 April 2022

**For research use only**

**Publishing research using AST1008? Please let us know so that we can cite your publication as a reference.**

