



Data Sheet

HUMAN CHROMOGRANIN B [CgB] (aa 420-432)

ANTIBODY, POLYCLONAL

Catalog no.: AST1019.1 / AST1019.2
Immunogen: Synthetic human CgB (aa 420-432) KLH-conjugated (FLGEGHHRVQENQYC)
 Underlined amino acids were substituted or added for technical reasons.

Synonyms: Secretogranin-1, Chromogranin-B, CgB, Secretogranin I, Sgl

Swiss-Prot No: P05060

Gene Information: Gene Name: CHGB

GeneID: 1114

Host: Rabbit

Matrix: Serum, 0.09% NaN₃

Specificity: Human CgB (aa 420-432)

There was no cross reactivity detected with human CgB peptides (aa 1-16; 16-37; 153-167; 244-255; 259-270; 312-331; 406-417; 480-493; 506-517; 542-552; 555-565; 568-577; 580-593; 622-632; 647-657).

Contents: 20 µl / 100 µl

Known applications: RIA², Western Blot, immunohistochemistry (paraffin sections, 1:40-400)¹

This antibody has not been tested for use in all applications. This does not necessarily exclude its use in non-tested procedures. The stated dilutions are recommendations only. End users should determine optimal dilutions in their system using appropriate negative/positive controls.

Store at: 2-8 °C

References: 1. Portela-Gomes GM & Stridsberg M (2002) Region-specific antibodies to chromogranin B display various immunostaining patterns in human endocrine pancreas. *J. Histochem. Cytochem.* **50**: 1023-1030.

2. Stridsberg M, Eriksson B, Öberg K & Janson ET (2005) A panel of 13 region-specific radioimmunoassays for measurements of human chromogranin B. *Regul. Pept.* **125**: 193-199

Last updated on: 25 January 2023

For research use only

Publishing research using AST1019? Please let us know so that we can cite your publication as a reference.

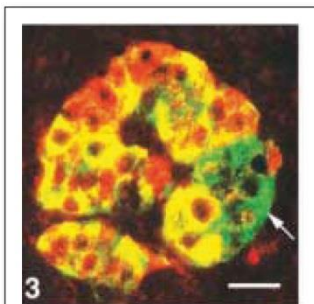


Figure 1: Immunofluorescence image of Chromogranin B staining in paraffin section of human pancreatic islet. The section was incubated with a mixture of an anti-insulin antibody and AST1019 (1:40) at room temperature overnight, followed by appropriate secondary antibodies coupled to FITC or Texas Red. Insulin (green) and CgB 420-432 (red) colocalize in most alpha-cells (yellow). Scale bar = 40 µm.

Portela-Gomes GM et al. (2002)
J Histochem Cytochem 50: 1023-1030.

