

## Data Sheet

# HUMAN CHROMOGRANIN B [CgB] (aa 647-657)

## ANTIBODY, POLYCLONAL

**Catalog no.:** AST1027.1 / AST1027.2  
**Immunogen:** Synthetic human CgB (aa 647-657) KLH-conjugated (CYQKIAEKFSQRG)  
 Underlined amino acids were substituted or added for technical reasons.

**Synonyms:** Secretogranin-1, Chromogranin-B, CgB, Secretogranin I, Sgl

**Swiss-Prot No:** P05060

**Gene Information:** Gene Name: CHGB  
 GeneID: 1114

**Host:** Rabbit

**Matrix:** Serum

**Specificity:** Human CgB (aa 647-657)  
 There was no cross reactivity detected with human CgB peptides (aa 1-16; 16-37; 153-167; 244-255; 259-270; 312-331; 406-417; 420-432; 480-493; 506-517; 542-552; 555-565; 568-577; 580-593; 622-632).

**Contents:** 20 µl / 100 µl (lyophilized)  
 Resuspend in 20 µl / 100 µl aqua bidest.

**Known applications:** RIA<sup>2</sup>, Western Blot, immunohistochemistry (paraffin sections, 1:20-200)<sup>1</sup>  
 This antibody has not been tested for use in all applications. This does not necessarily exclude its use in non-tested procedures. The stated dilutions are recommendations only. End users should determine optimal dilutions in their system using appropriate negative/positive controls.

**Store at:** 2-8 °C (lyophilized); -20 °C (dissolved)

Repeated thawing and freezing must be avoided

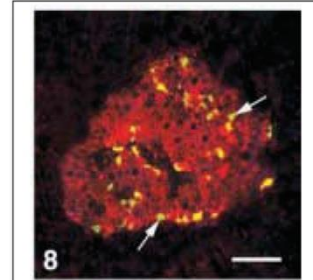
**References:** 1. Portela-Gomes GM & Stridsberg M (2002) Region-specific antibodies to chromogranin B display various immunostaining patterns in human endocrine pancreas. *J. Histochem. Cytochem.* **50**: 1023-1030.

2. Stridsberg M, Eriksson B, Öberg K & Janson ET (2005) A panel of 13 region-specific radioimmunoassays for measurements of human chromogranin B. *Regul. Pept.* **125**: 193-199.

**Last updated on:** 4 May 2022

### For research use only

**Publishing research using AST1027? Please let us know so that we can cite your publication as a reference.**



**Figure 1:** Immunofluorescence image of Chromogranin B staining in paraffin section of human pancreatic islet. The section was incubated with a mixture of an anti-somatostatin antibody and AST1027 (1:20) at room temperature overnight, followed by appropriate secondary antibodies coupled to FITC or Texas Red. Somatostatin (green) and CgB 647-657 (red) colocalize in a fraction of delta-cells (yellow), whereas other delta-cells were non-reactive (arrows). Scale bar = 80 µ.

Portela-Gomes GM et al. (2002)  
*J Histochem Cytochem* **50**: 1023-1030.

