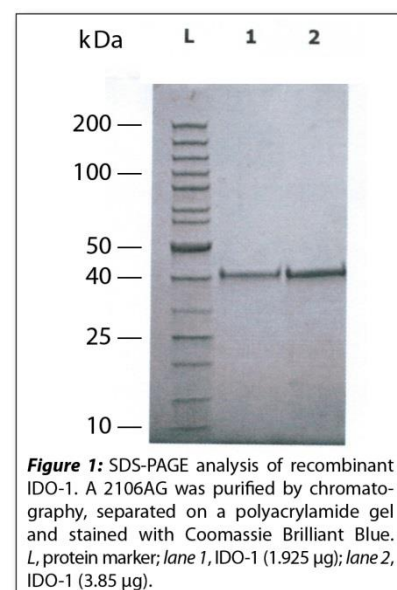


Data Sheet

HUMAN INDOLEAMINE 2,3-DIOXYGENASE 1 (IDO-1)

RECOMBINANT

Catalog no.:	A 2106AG.1
Name:	Indoleamine 2,3-dioxygenase 1
Synonyms:	Indoleamine-pyrrole 2,3-dioxygenase, EC 1.13.11.52
MW:	45.325 kDa
Swiss-Prot No:	P14902
Gene Information:	Gene Name: IDO1, IDO, INDO GeneID: 3620
Source:	E. coli
Purification:	Immobilized metal ion affinity chromatography, preparative size exclusion chromatography
Storage buffer:	50 mM Tris/HCl pH8.0
Purity:	≥ 90%
Specific Activity:	200 U/μg. One unit is defined as the conversion of 1 pmol/min L-tryptophan to N-formyl-kynurenine.
Contents:	50 μg (lyophilized) Resuspend in aqua bidest. for required concentration
Store at:	-20 °C Repeated thawing and freezing must be avoided
Last updated on:	04 May 2022



For research use only

Publishing research using A 2106AG? Please let us know so that we can cite your publication as a reference.

