



Data Sheet

INTEGRIN (*GEODIA CYDONIUM*)

ANTIBODY, POLYCLONAL

Catalog no.:	AC1003.1 / AC1003.2
Immunogen:	Integrin from <i>Geodia cydonium</i>
Swiss-Prot No:	O18428
Host:	Rabbit
Matrix:	Serum
Specificity:	Specific for integrin, tested against following species: <i>Geodia cydonium</i> , <i>Suberites domuncula</i> , <i>Lubomirskia baikalensis</i> , <i>Tethya aurantium</i>

Contents: 20 µl / 100 µl (lyophilized)
Resuspend in 20 µl / 100 µl aqua bidest.

Known applications: ELISA (1:40 000), Western Blot (1:4000)¹, immunoprecipitation, immunohistochemistry (resin sections, 1:400)¹

This antibody has not been tested for use in all applications. This does not necessarily exclude its use for non-tested procedures. The stated dilutions are recommendations only. We suggest that the applicant titrates the antibody in his/her system using appropriate negative/positive controls.

Store at: 2-8 °C (lyophilized); -20 °C (dissolved)

Repeated thawing and freezing must be avoided

References: 1. Wimmer W, Blumbach B, Diehl-Seifert B, Koziol C, Batel R, Steffen R, Müller IM and Müller WEG (1999). Increased expression of integrin and receptor tyrosine kinase genes during autograft fusion in the sponge *Geodia cydonium*. *Cell Adhes. Commun.* **7**: 111-124.

Last updated on: 14 April 2022

For research use only

Publishing research using AC1003? Please let us know so that we can cite your publication as a reference.

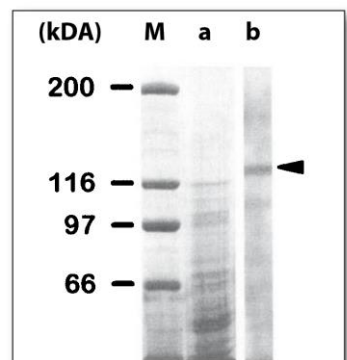


Figure 1: Western Blot analysis of AC1003 specificity. Crude extracts of *Geodia cydonium* membrane fraction were separated by SDS-PAGE and immunoblotted with AC1003. Lane a: Coomassie staining of proteins in polyacrylamide gel; lane b: AC1003 detects a band of about 123 kDa, corresponding to α -integrin from *G. cydonium*. M, marker.

Wimmer W et al. (1999) *Cell Commun Adhes* 7(2):111-124

