

## Data Sheet

# HUMAN LAMININ 5

## ANTIBODY, PURIFIED IgG, POLYCLONAL

<b>Catalog no.:</b>	AP1002.3 / AP1002.4
<b>Immunogen:</b>	Human Laminin 5; Laminin 5 consists of three chains: $\alpha$ 3, $\beta$ 3 and $\gamma$ 2
<b>Synonyms:</b>	Laminin 332, Epiligrin, Kalinin, Nicein
<b>Swiss-Prot No:</b>	Q16787, Q13751 and Q13753
<b>Gene Information:</b>	Gene names: LAMA3, LAMB3 and LAMC2 GeneID's: 3909, 3914 and 3918
<b>Host:</b>	Rabbit
<b>Matrix:</b>	IgG, Protein G purified from serum; PBS
<b>Specificity:</b>	Human total Laminin 5, mouse, rat, and bovine Laminin 5

**Contents:** 10  $\mu$ g / 100  $\mu$ g (lyophilized)

Resuspend in 10  $\mu$ l/100  $\mu$ l aqua bidest.

**Known applications:** Western Blot<sup>1,2,5,7</sup>, immunoprecipitation<sup>3</sup>, immunohistochemistry (cryosections, methanol-fixed, 1.5-3  $\mu$ g/ml)<sup>3,4,6,7,8</sup>, immunocytochemistry<sup>5,7</sup>

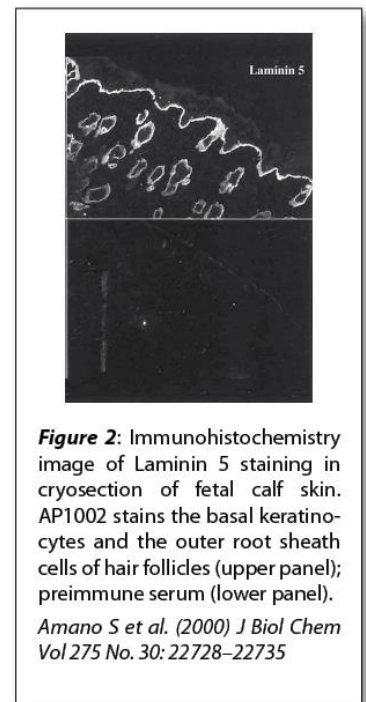
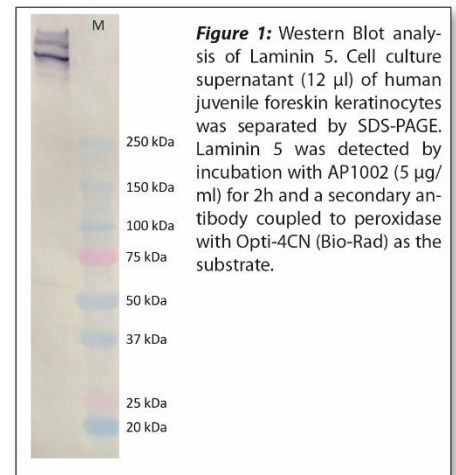
This antibody has not been tested for use in all applications. This does not necessarily exclude its use in non-tested procedures. The stated dilutions are recommendations only. End users should determine optimal dilutions/concentrations in their system using appropriate negative/positive controls.

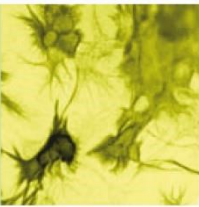
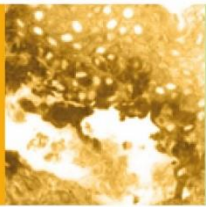
**Store at:** 2-8 °C (lyophilized); -20 °C (dissolved)

Repeated thawing and freezing must be avoided

### References:

1. Marinkovich MP, Lunstrum GP, Burgeson RE (1992). The anchoring filament protein kalinin is synthesized and secreted as a high molecular weight precursor. *J Biol Chem* **267**(25): 17900-17906.
2. Zillikens D, Kawahara Y, Ishiko A, Shimizu H, Mayer J, Rank CV, Liu Z, Giudice GJ, Tran HH, Marinkovich MP, Brocker EB, Hashimoto T (1996). A novel subepidermal blistering disease with autoantibodies to a 200-kDa antigen of the basement membrane zone. *J Invest Dermatol* **106**(6): 1333-1338.
3. Amano S, Scott IC, Takahara K, Koch M, Champlaud MF, Gerecke DR, Keene DR, Hudson DL, Nishiyama T, Lee S, Greenspan DS, Burgeson RE (2000). Bone morphogenetic protein 1 is an extracellular processing enzyme of the laminin 5 gamma 2 chain. *J Biol Chem* **275**(30): 22728-22735.





4. Libby RT, Champlaud M-F, Claudepierre T, Xu Y, Gibbons EP, Koch M, Burgeson RE, Hunter DD, Brunken WJ (2000). Laminin Expression in Adult and Developing Retinae: Evidence of Two Novel CNS Laminins. *The Journal of Neuroscience* **20**(17): 6517-6528.
5. Waterman EA, Sakai N, Nguyen NT, Horst BAJ, Veitch DP, Dey CN, Ortiz-Urda S, Khavari PA, Marinkovich MP (2007). A Laminin-Collagen Complex Drives Human Epidermal Carcinogenesis through Phosphoinositol-3-Kinase Activation. *Cancer Research* **67**(9): 4264-4270.
6. Choi SK, Kim JH, Lee D, Lee JB, Kim HM, Tchah HW, Hahn TW, Joo M, Ha CI (2008). Different epithelial cleavage planes produced by various epikeratomes in epithelial laser in situ keratomileusis. *Journal of Cataract & Refractive Surgery* **34**(12): 2079-2084.
7. Tran M, Rousselle P, Nokelainen P, Tallapragada S, Nguyen NT, Fincher EF, Marinkovich MP (2008). Targeting a Tumor-Specific Laminin Domain Critical for Human Carcinogenesis. *Cancer Research* **68**(8): 2885-2894.
8. Song J, Lokmic Z, Lammermann T, Rolf J, Wu C, Zhang X, Hallmann R, Hannocks MJ, Horn N, Ruegg MA, Sonnenberg A, Georges-Labouesse E, Winkler TH, Kearney JF, Cardell S, Sorokin L (2013). Extracellular matrix of secondary lymphoid organs impacts on B-cell fate and survival. *Proc Natl Acad Sci USA* **110**(31): E2915-E2924.

**Last updated on:** 27 April 2022

**For research use only**

**Publishing research using AP1002? Please let us know so that we can cite your publication as a reference.**

