

Data Sheet

HUMAN NATRIURETIC PEPTIDE RECEPTOR Bi

[NPR-Bi]

ANTIBODY, POLYCLONAL

Catalog no.:	A 1008.1 / A 1008.2
Immunogen:	Synthetic human NPR-Bi isoform a, bTG-conjugated
Synonyms:	Natriuretic Peptide Receptor B short isoform
Swiss-Prot No:	P20594-2
Gene Information:	Gene Name: NPR2 GenelD: 4882
Host:	Rabbit
Matrix:	Serum
Specificity:	Human NPR-Bi
Contents:	20 µl / 100 µl (lyophilized) Resuspend in 20 µl / 100 µl aqua bidest.
Known applications:	Western Blot (1:100); immunohistochemistry (cryosections, 1:10.000; 1:100 affinity purified antibody) ¹
Store at:	2-8 °C (lyophilized); -20 °C (dissolved) Repeated thawing and freezing must be avoided
References:	1. Hirsch JR, Skutta N, Schlatter E (2003). Signaling and distribution of NPR-Bi, the human splice form of the natriuretic peptide receptor type B. <i>AM J Physiol Renal Physiol</i> 285 :F370-F374.
Last updated on:	16 March 2022

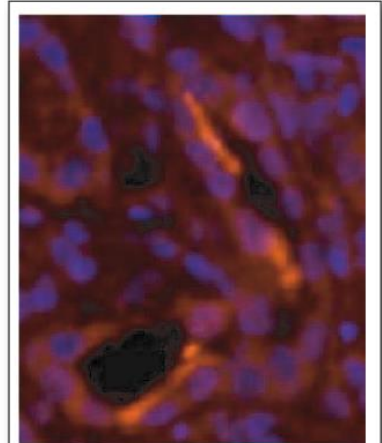


Figure 1: Immunofluorescence image of NPR-Bi staining in cryosection of human kidney. The section was incubated with A 1008 overnight and detected using biotinylated secondary antibody and Alexa Fluor 594-streptavidin conjugate. The nuclei were visualized with DAPI. A 1008 stains the luminal membrane of cortical collecting ducts.

Hirsch JR et al. (2003) *Am J Physiol Renal Physiol* **285**: F370–F374

For research use only

Publishing research using A 1008? Please let us know so that we can cite your publication as a reference.

