

Data Sheet

HUMAN PARATHYROID HORMONE-RELATED PEPTIDE [PTHrP] (aa 107-111)

ANTIBODY, POLYCLONAL

Catalog no.:	A 4242.1 / A 4242.2
Immunogen:	Synthetic human PTHrP (aa 107-111) KLH-conjugated (TRSAW)
Synonyms:	Parathyroid hormone-like protein (PLP), Osteostatin
Swiss-Prot No:	P12272
Gene Information:	Gene Name: PTHLH, PTHRP GeneID: 5744
Host:	Sheep
Matrix:	Serum
Specificity:	Human PTHrP (aa 107-111)
Contents:	20 µl / 100 µl (lyophilized) Resuspend in 20 µl / 100 µl aqua bidest.
Known applications:	ELISA (1:3000), immunohistochemistry (paraffin sections, 1:100) This antibody has not been tested for use in all applications. This does not necessarily exclude its use in non-tested procedures. The stated dilutions are recommendations only. End users should determine optimal dilutions in their system using appropriate negative/positive controls.
Store at:	2-8 °C (lyophilized); - 20 °C (dissolved) Repeated thawing and freezing must be avoided
Last updated on:	06 April 2022

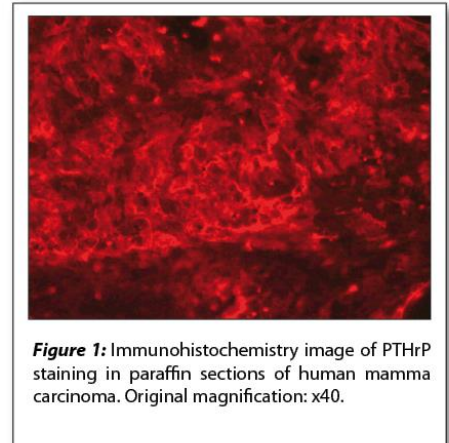


Figure 1: Immunohistochemistry image of PTHrP staining in paraffin sections of human mammary carcinoma. Original magnification: x40.

For research use only

Publishing research using A 4242? Please let us know so that we can cite your publication as a reference.

