

Data Sheet

HUMAN THYMOSIN α_1

ANTIBODY, POLYCLONAL

Catalog no.:	A 9510.1 / A9510.2
Immunogen:	Synthetic human Thymosin α_1 KLH conjugated (SDAAVDTSSSEITTKDLKEKKEVVEEAEN)
Synonyms:	Prothymosin α (aa 2-29)
Swiss-Prot No:	P06454
Gene Information:	Gene Name: PTMA, TMSA Gene ID: 5757
Host:	Rabbit
Matrix:	Serum
Specificity:	Human and mouse Thymosin α_1 There was no cross reactivity obtained against human Thymosin β_4 and human Thymulin.
Contents:	20 μ l / 100 μ l (lyophilized) Resuspend in 20 μ l / 100 μ l aqua bidest.
Known applications:	ELISA (1:4000), immunohistochemistry (paraffin sections, 1:100-1000; cryosections, 1:50) ^{1,2} This antibody has not been tested for use in all applications. This does not necessarily exclude its use in non-tested procedures. The stated dilutions are recommendations only. End users should determine optimal dilutions in their system using appropriate negative/positive controls.
Store at:	2-8 °C (lyophilized); - 20 °C (dissolved) Repeated thawing and freezing must be avoided
References:	1. Zoltowska A (1997). Pathogenesis of breast carcinoma. Immunohistochemical study. <i>Arch Immunol Ther Exp (Warsz)</i> 45 (1): 101-108. 2. Zoltowska A, Stepinski J, Kuczowski J, Kaminski M, Cynowska B, Kruszewski W (1998). Epithelialmesenchymal cell interactions and participation of the neuroendocrine markers in tumor development. <i>Immunohistochemical study. Arch Immunol Ther Exp (Warsz)</i> 46 (4): 247-251.

Last updated on: 13 April 2022

For research use only

Publishing research using A 9510? Please let us know so that we can cite your publication as a reference.

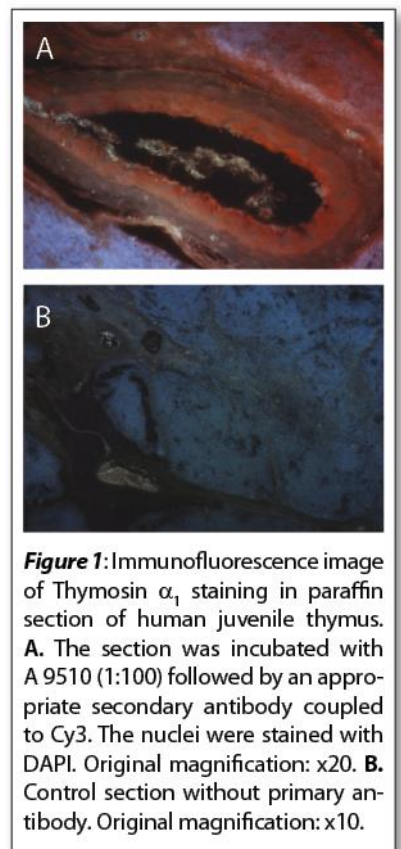


Figure 1: Immunofluorescence image of Thymosin α_1 staining in paraffin section of human juvenile thymus. **A.** The section was incubated with A 9510 (1:100) followed by an appropriate secondary antibody coupled to Cy3. The nuclei were stained with DAPI. Original magnification: x20. **B.** Control section without primary antibody. Original magnification: x10.

